

# The Seven Summits of Phoenix

Challenge your *heart*. Challenge your *mind*. Challenge your *self*. Challenge *Phoenix*.

## Phoenix Four Challenge

8:00am Challenge Begins  
4:00pm Challenge Ends

### SOME REMINDERS

- Stay hydrated – bring a hydration pack or water bottles, enough to carry several liters with you.
- Be sure to bring a watch and pen/pencil with you.
- Safety is key – be prepared with your Ten Essentials.
- Stay on trail – please do not cut switchbacks.

*Thank you for being responsible and minimizing the impact on our desert parks and preserves.*

Trailhead (Start)	Time: _____
<i>Papago Park West Buttes</i>	Time (Summit): _____
Lookout Mountain	Time (Summit): _____
<i>Shaw Butte</i>	Time (Summit): _____
<i>North Mountain</i>	Time (Summit): _____
Trailhead (Finish)	Time: _____
Total Hiking Time	_____ Hours _____ Minutes



# The Seven Summits of Phoenix

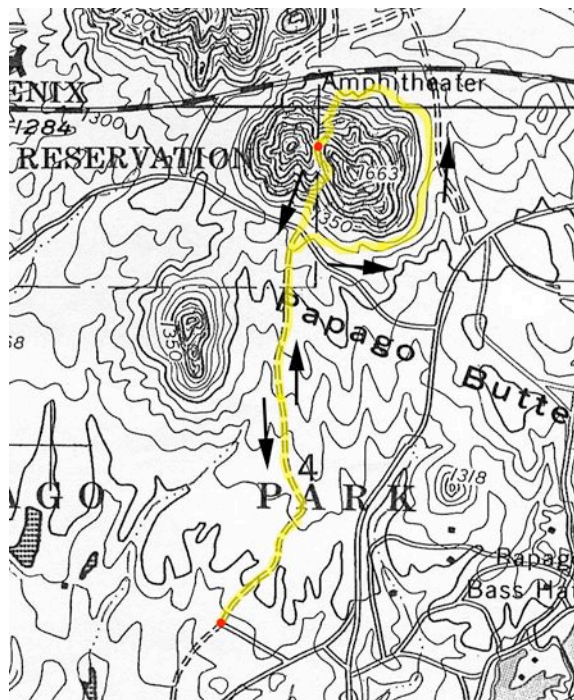
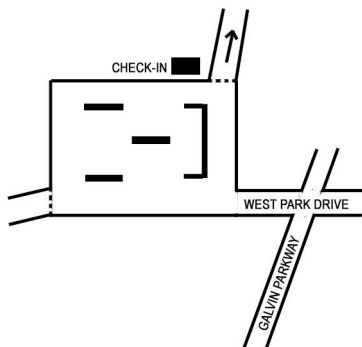
Challenge your *heart*. Challenge your *mind*. Challenge your *self*. Challenge *Phoenix*.

## Papago Park West Buttes (1,700ft)

Length: 3 miles

Elevation Gain: ~200ft

Description: Parking is west of Galvin Parkway between McDowell Road and Van Buren Street. From the parking lot, head north following the gated, paved trail ("West Park Drive"). Upon reaching Eliot Ramada, go east on the trail and follow the buttes around to the north. Hike up to the saddle between the buttes, and continue south towards Eliot Ramada. Follow the paved trail back to the trailhead.

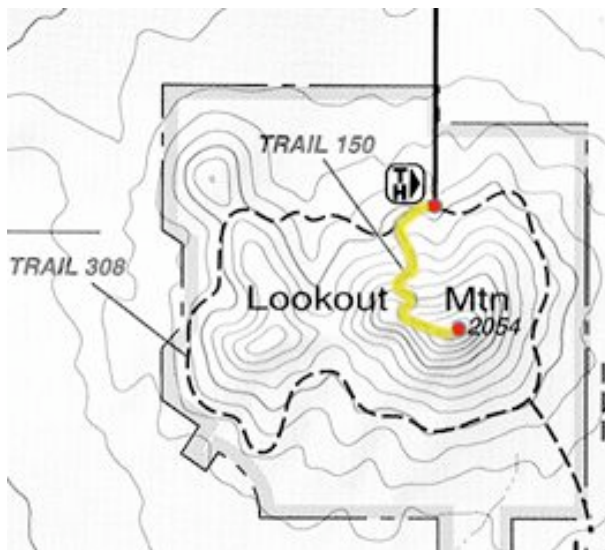
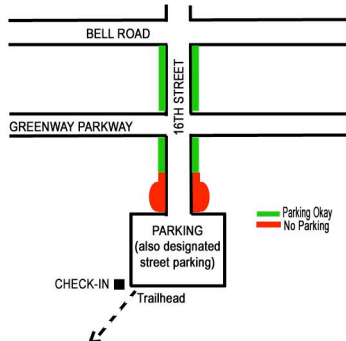


## Lookout Mountain (2,054ft)

Length: 1 mile

Elevation Gain: 475ft

Description: 1 mile south of Bell Road on 16th Street. Parking area and designated street parking only. Begin hiking west on Trail #308 to intersection with Trail #150. Continue south on Trail #150 to summit.



# The Seven Summits of Phoenix

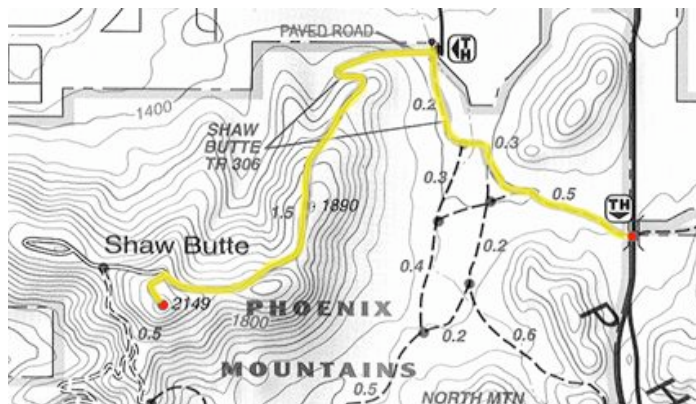
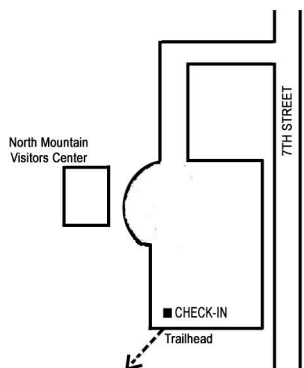
Challenge your *heart*. Challenge your *mind*. Challenge your *self*. Challenge *Phoenix*.

## Shaw Butte (2,149ft\*)

Length: 5 miles

Elevation Gain: 670ft

Description: Parking is located at the North Mountain Visitors Center, 1/2 mile south of Thunderbird on the west side of 7<sup>th</sup> Street. Begin hiking west on Trail #100. Go north on Trail #306 and continue on #306 past the designated trailhead – at which point the trail becomes a paved road to the summit.



## North Mountain (2,140ft)

Length: 1.6 miles

Elevation Gain: 614ft

Description: 7th Street and Peoria. Turn west into North Mountain Park. The trailhead is at the north side of the Maricopa Ramada. Take the trail north to the saddle, and then follow the paved road to the summit.

